



## Health and Wellbeing Board 8<sup>th</sup> December, 2016

### PARTNERSHIP PREVENTION PROGRAMME, HEALTHY LIVES

#### Responsible Officer

Email: Pennybason@shropshire.gov.uk

Tel:

Fax:

---

#### 1. Summary

- 1.1 This paper serves as an update on the Prevention Programme with an updated Programme PiD, and also includes a short, high level description of the Oswestry Pilot, and updates on the Diabetes Prevention and Safe and Well visits as part of the Pilot
- 1.2 As a reminder - this Partnership Prevention Programme, **Healthy Lives**, will focus on taking a whole system approach to reducing demand on services and relies on working together in partnership to deliver activity; it supports integration across health and care as set out in the Health and Wellbeing Strategy and is an integral component of the STP Neighbourhoods Workstream.
- 1.3 The programme is made up of the following programmes – 3 HWBB Exemplars highlighted in bold
  - Social Prescribing
  - Falls Prevention,
  - **CVD & Healthy Weight and Diabetes Prevention,**
  - **Carers/Dementia/UTIs,**
  - **Mental Health,**
  - Future Planning & Housing,
  - COPD/ Respiratory & Safe and Well
- 1.4 **Appendix A** below includes the Partnership Prevention Programme PID – long form, the Diabetes Prevention PiD and Logic Model, and the Safe and Well PiD.
- 1.5 The Partnership Prevention Programme is moving forward supported by a Steering Group. Please see diagram below in section 4 – **Background**, for the visual and recommended governance of this programme.
- 1.6 The full financial investment required is currently unknown, however as the programmes develop it will become clear what investment is needed. Currently the programmes are developing considering first what can be done better with little investment, but it is felt that this is unsustainable. The Delivery Group is

asked to consider how best to work with local partners to secure investment in prevention as part of service reconfiguration. For example some areas are top slicing investment from the total STP pot.

## 2. Recommendations

- 2.1 Discuss and agree the approach to secure financial investment for the Prevention Programme via the STP
- 2.2 Endorse approach of the Oswestry Pilot
- 2.3 Note progress of the Diabetes Prevention and the Safe and Well programmes

## REPORT

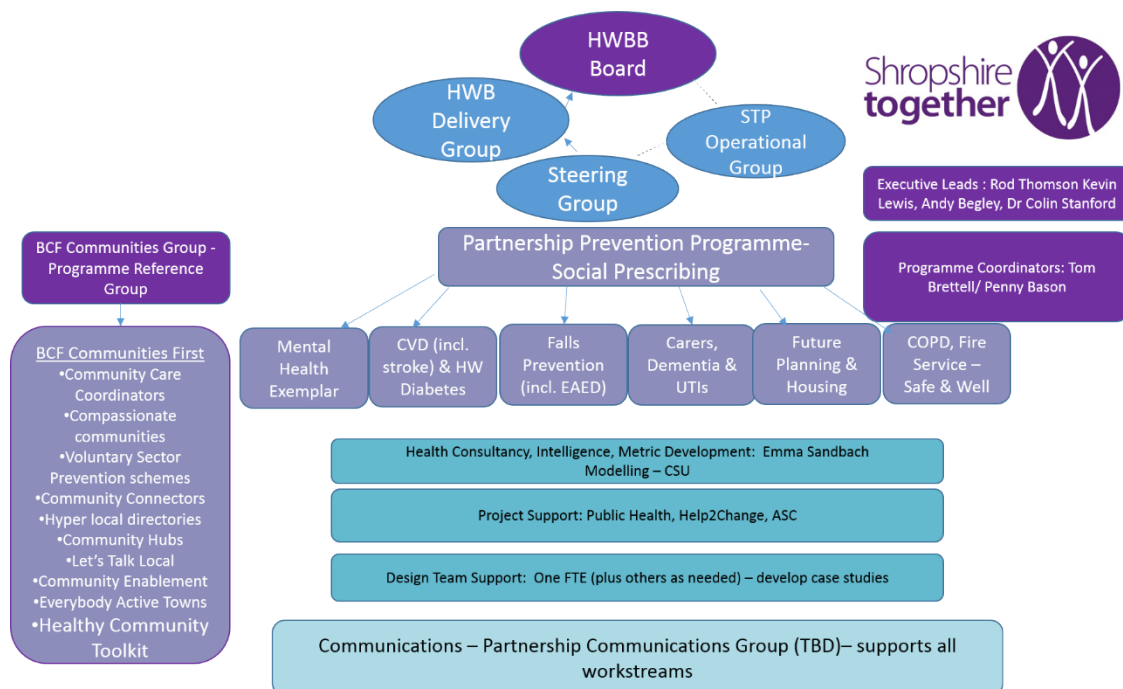
### 3. Purpose of Report

3.1 The purpose of the report is to update the Health and Wellbeing Board on progress of the Partnership Prevention Programme, Healthy Lives, and provide the opportunity to discuss the Oswestry Pilot – in particular the Diabetes Prevention programme and the safe and well visits. This report also provides the opportunity to discuss financial investment in prevention as part of the Shropshire STP Neighbourhoods and agree an approach to secure investment.

### 4. Background

4.1 Please see Appendix A for relevant documentation.

#### 4.2 Governance



**4.3 Financial Investment** To deliver the Shropshire strategic vision as outlined in the HWB Strategy and the STP documents, and as required by the NHS Forward View, **investment must follow activity**. The Prevention Programme will expect the STP planning to manage and support the flow of funds to support activity in the Neighbourhoods element of the STP.

To date, lead roles have been identified in Diagram 3 above, and human and financial resource from Shropshire Council, Public Health and the CCG, along with support from the voluntary and community sector, GP surgeries, and communities have been mobilised to support this work. The programme will be designed to reduce costs and working in partnership will undoubtedly provide efficiencies, however investment will be required to make progress.

## 5. Engagement

5.1 Each programme/ project of the Prevention Programme is required to engage with a wide range of stakeholders, including patient/ service user representatives, as part of the development and delivery of any programme or change of service.



## 6. Risk Assessment and Opportunities Appraisal (including Equalities, Finance, Rural Issues)








6.1 The purpose of the HWBB is to reduce inequalities in health, as such all programme development will, to the best of our ability, develop services where equity is at the core of decision making.

<b>List of Background Papers (This MUST be completed for all reports, but does not include items containing exempt or confidential information)</b>
<b>Cabinet Member (Portfolio Holder)</b>
Cllr Karen Calder
<b>Local Member</b>
<b>Appendices</b>
Appendix A

## Appendix A

<b>Project Name:</b>	<b>Partnership Prevention Programme, Healthy Lives</b>
----------------------	--

Role	Name		Documents	Oswestry Pilot
<b>Project Level Roles</b>				
Business Sponsor	Rod Thomson/ Andy Begley/ Sam Tilley		 Prevention Programme Project In	 Oswestry Pilot Briefv2.docx
Business Visionary	Kevin Lewis, Kate Garner			
Programme Managers	Tom Brettell/ Penny Bason			
Technical Expert	Emma Sandbach			
Project Support	1FTE Design Team	Neil Felton, Mel France		
<b>RESOURCES</b>	<b>Outstanding issues</b>			
•	<ul style="list-style-type: none"> <li>• Funding for programme delivery</li> <li>•</li> </ul>			
<b>Solution Development Project</b>	<b>Sub Projects</b>	<b>Programme Managers</b>	<b>Programme PiD, project pids</b>	<b>Logic Model, Delivery Grid</b>
<b>Social Prescribing</b>	<ul style="list-style-type: none"> <li>• Oswestry Pilot</li> </ul>	Katy Warren		
Mental Health	<ul style="list-style-type: none"> <li>• Needs Assessment</li> <li>• Suicide Prevention</li> <li>• Single Point of contact</li> <li>• Section 136</li> </ul>	Lorraine Laverton & Gordon Kochane		
Falls Prevention	<ul style="list-style-type: none"> <li>• Community PSI</li> <li>• Commissioned Service</li> <li>• Improving Population</li> </ul>	Miranda Ashwell		

	<ul style="list-style-type: none"> <li>Surveillance</li> <li>Fracture Liaison</li> <li>Falls Awareness Campaign</li> </ul>			
CVD & HW Diabetes	<ul style="list-style-type: none"> <li>Oswestry Pilot</li> <li>Identification of Pre-Diabetes</li> <li>Protocol</li> <li>Structured Education</li> </ul>	Dee Hall	 HWD and CVD PIDv2.docx  Diabetes Identification PID.doc  Gold Standard Protocol PIDv2.docx	 Logic Model V4.docx  Oswestry Nurses Forum.ppt
Carers, Dementia, UTIs	TBD	Val Cross & Pete Downer		
Future Planning & Housing	<ul style="list-style-type: none"> <li>Housing</li> <li>Hospital</li> <li>Communities</li> </ul>	Laura Fisher & Tom Brettell		
COPD & Fire Service	<ul style="list-style-type: none"> <li>Oswestry Pilot</li> <li>Safe &amp; Well Role out</li> </ul>	Linda Offord & Guy Williams & Tom Brettell	 safe and well pid.docx  safe and well oswestry pilot pid.doc	
Project Tools	Overarching – Level 1	Programme Management Level 2	Project Management Level 3	
	<ul style="list-style-type: none"> <li>Programme PiD</li> <li>PiD on a page</li> </ul>	<ul style="list-style-type: none"> <li>Programme PiD</li> <li>Programme tracker</li> <li>Logic Model</li> <li>Delivery Grid</li> </ul>	<ul style="list-style-type: none"> <li>Project PiD</li> <li>Project tracker</li> <li>Problem statement</li> <li>Metrics and</li> </ul>	

			Evaluation	
Other Roles				
Workshop Facilitator				
Business Advisor				
Analysts and Modelling				
Administration				